

### GENERAL TECHNICAL CHARACTERISTICS 技术特性

Reference standards 参考标准	IEC 60110.1
Dielectric 介质材料	Polypropylene
Characteristics 特性	Low DF, low ESL and low ESR, High Voltage, high frequency and high Dv/dt. High current Resistance, excellent heat dissipation
Application 应用	Widely used in high power and high frequency resonant devices.



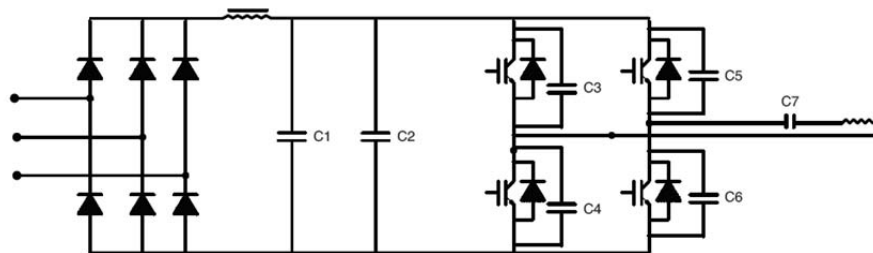
### ELECTRICAL CHARACTERISTICS 电气特性

Operating temperature 工作温度范围	- 40 to + 85 °C
Capacitance range 容量范围	0.1 µF to 85 µF
Rated voltage range 额定电压	100 kVar to 1500 kVar
Capacitance tolerance 容量偏差	± 5%, ± 10%
Dissipation factor 损耗角正切	$\leq 5 \times 10^{-4}$ Measured at 1000 Hz and 25±5°C
Life expectancy 预期寿命	100,000 hours at $U_N$ and 70 °C 30,000h at $U_{rms}$

### TEST METHODS AND PERFORMANCES 测试方法

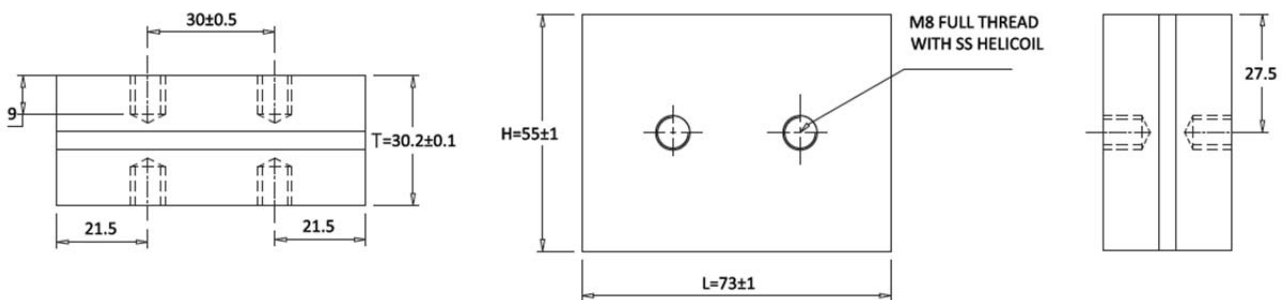
Test voltage between terminals 两端耐压	$1.5 \times U_{NAC}$ applied to 10s at 25±5°C
Insulation resistance( $IR \cdot C_N$ ) 绝缘电阻	$3.5 \times U_{NDC}$ applied for 10s at 25±5°C $\geq 3000s$ 60s at 100Vdc (20±5°C)

### Typical Circuit 典型电路



C7 is the water-cooled capacitor in the series resonant capacitor

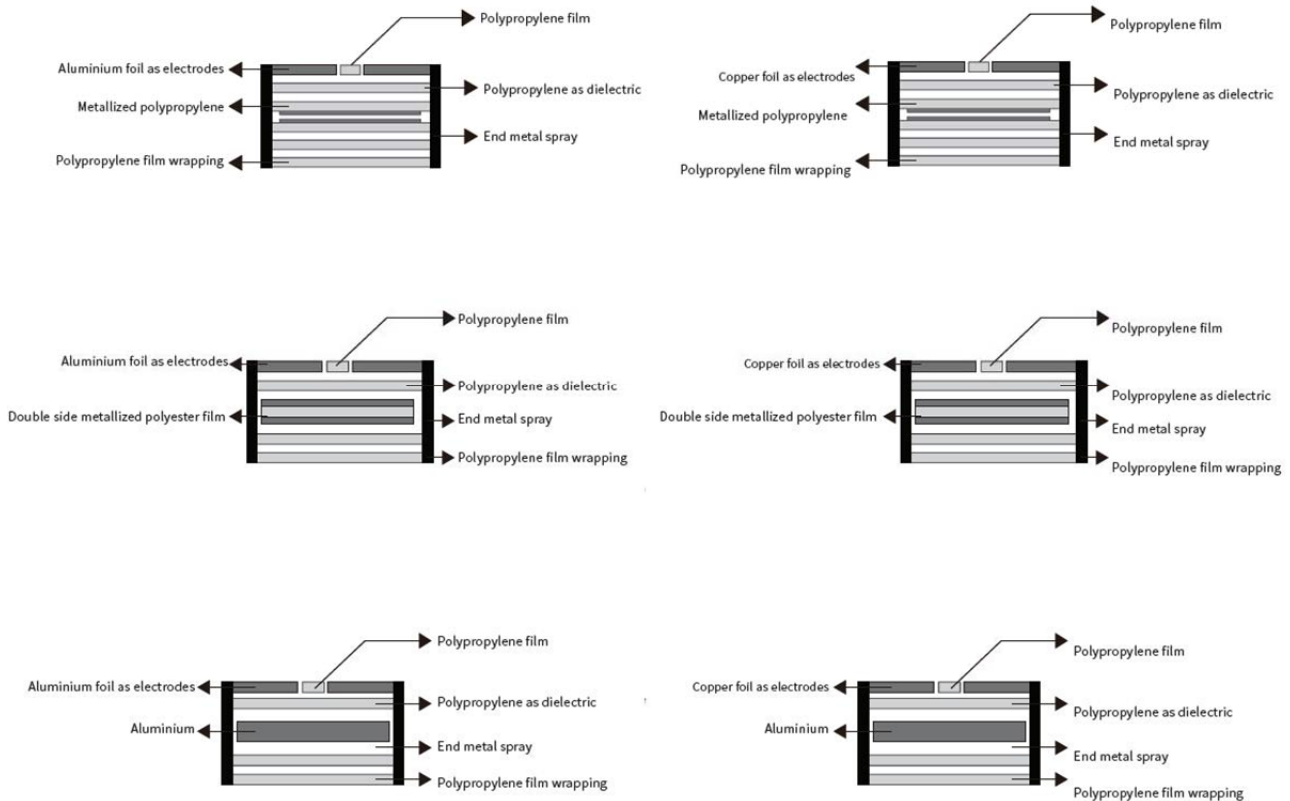
### OUTLINE DRAWING 外形图



### HOW TO ORDER:

<u>    K1B    </u>	<u>    202A    </u>	<u>    604    </u>	<u>    K    </u>	<u>    401    </u>	<u>    S    </u>	<u>    ***    </u>
Series Code:	Voltage:	Capacitance:	Cap. Tol.:	Rated Power:	Shape:	Internal
K1B:	202A:2000Vac	104: 0.1µF	J: ± 5%,	401: 400kVar	S: Square	Code
AGB Series		105: 1.0µF	K: ± 10%			

### CONSTRUCTION DIAGRAM



### ELECTRICAL SPECIFICATION 规格型号参考

Unit: mm

Part Number	Rated Voltage Vrms	Nominal Capacitance (μF) at 1KHz	Dimension			Max Irms A	Max Power kVar	Freq Range @Full Power (KHz)	ESR mΩ
			L	H	T				
K1B102A254K401S***	1000	0.25	73	55	30.2	450	400	256-323	1.5
K1B102A304K401S***	1000	0.30	73	55	30.2	600	400	213-478	1.2
K1B701A504K401S***	700	0.50	73	55	30.2	600	400	259-285	1.0
K1B701A664K401S***	700	0.66	73	55	30.2	600	400	197-220	0.8
K1B701A105K401S***	700	1.00	73	55	30.2	750	400	129-223	0.6
K1B501A135K351S***	500	1.30	73	55	30.2	750	350	170-196	0.5
K1B501A155K351S***	500	1.50	73	55	30.2	800	350	148-70	0.4
K1B501A205K351S***	500	2.00	73	55	30.2	800	350	110-145	0.2

Remark: 1. # Output; \*\*\* Internal code.

2. Customization for special specification and requirement is available.